

PATIENT HISTORY

I placed 2 implants #18 and 19 positions in early 2012. The implants initially integrated with no apparent problems and then were restored by the restorative referral. The patient returned only a few months later saying that he thought one of his implants may be loose. Unfortunately, after testing, I discovered that implant #18 had fully lost integration and was now mobile. I told him that the implant would most likely need to be removed and eventually replaced, but asked if he would be willing to try the LAPIP treatment at no charge just to see if we could gain any attachment. He consented and was re-booked for therapy the following week.

TREATMENT APPROACH

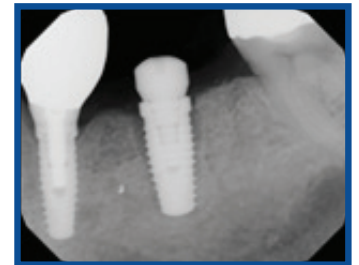
On the day of treatment I drilled through the crown, found the screw access channel, unscrewed the abutment screw, and removed the abutment and crown as one piece. I then placed a healing abutment and noted that the implant was spinning in the socket with only finger-tight torque applied to the driver. I then followed the LAPIP protocol around the implant and let the patient go with normal post-op instructions.

RESULTS

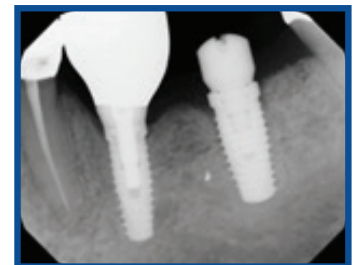
At the patient's 3 month follow-up, the implant felt stable when lightly tapping on the abutment with a mirror handle. The radiograph showed potential improvement in bone density as well, but I still wanted to wait a little longer to allow for additional healing/remodeling before removing the abutment to test the stability of the implant. At 6 months, I removed the abutment and torque-tested the implant to 20 N-cm, but I still didn't believe what I was seeing. I asked the patient's restorative dentist to place a temporary abutment and crown and wait an additional 3 months. Everything went according to plan. At 9 months, the implant was stable and the radiograph showed definite improvement in bone-implant contact. A new impression had to be taken for a new abutment/crown because the implant had changed its rotational position when it was loose. The new crown went on in late 2013, which was the last time I saw the patient. Three years later, his dentist sent me a radiograph showing complete bone fill and a still healthy re-integrated implant. A happy patient, surgeon and restorative dentist!



Pre-Op



1 Month Post-Op



9 Months Post-Op



4 Years Post-Op



ABOUT THE AUTHOR: NICHOLAS POULOS, DDS, MS

Dr. Poulos graduated from the University of Colorado-Boulder with honors and a double degree in neuroscience and psychology. He chose to stay in Colorado, attending the University of Colorado Dental School, where he graduated with honors. Dr. Nick earned his postgraduate certificate in periodontics and implantology as well as a master's degree in oral biology from the Medical College of Georgia in Augusta, Georgia.

SEE MORE
LAPIP RESULTS

SCAN
QR CODE

